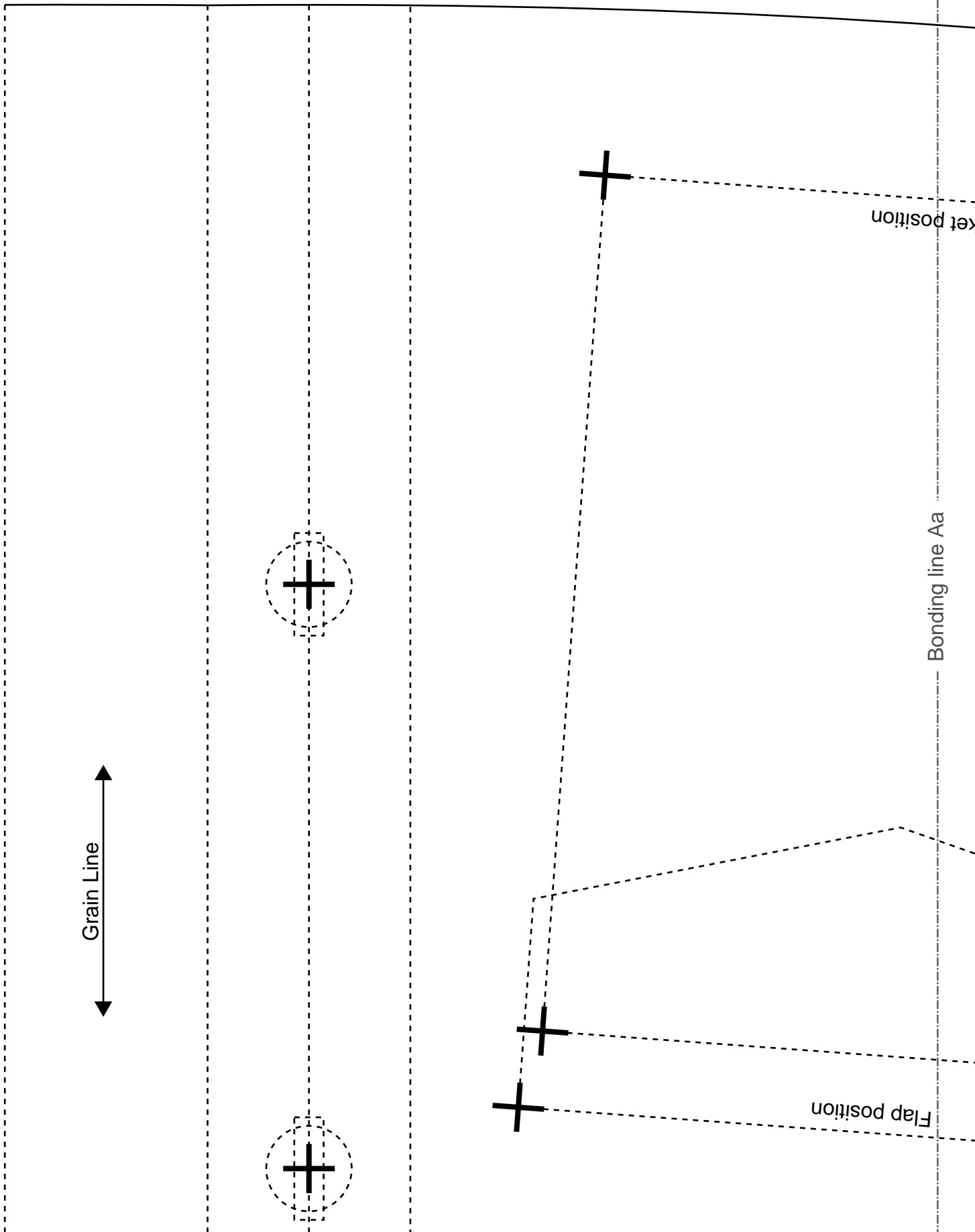


[Home](#)

[Back to Jacketshortcoat page](#)



Grain Line



Bonding line AA

Bonding line Aa



Flap position

Pocket position

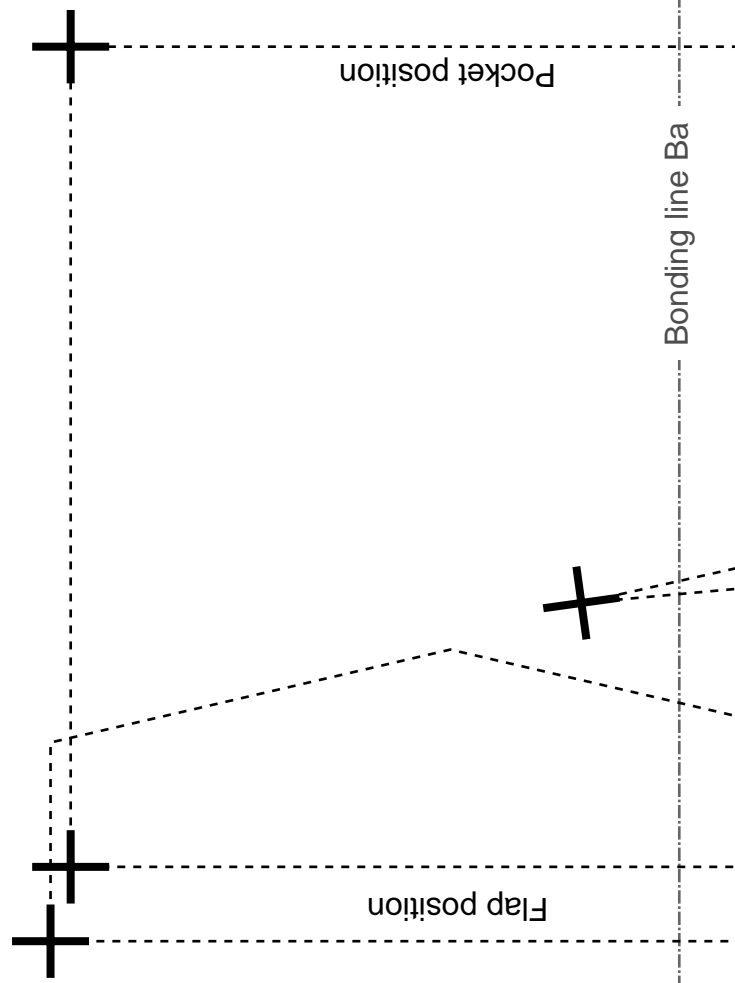
Front Body
two sheets



Bonding line Ba

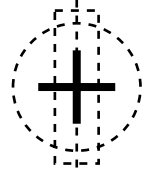
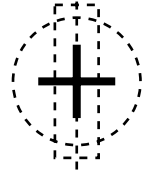
Pocket position

Flap position



Bonding line AA

Bonding line AB



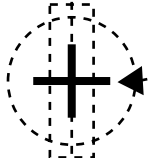
Center position

Folding line

Folding line

Bonding line AB

Baste



Collar position

Bonding line Ca
S

DRCOS

SITE [http://dr-cos.info\(en\)](http://dr-cos.info(en)) [http://dr-cos.com\(jp\)](http://dr-cos.com(jp))
MAIL info@dr-cos.com
Twitter https://twitter.com/drcos_com
facebook <https://www.facebook.com/drcoscom>

Bonding line AC

Bonding line AC

Bonding line Da

LADIES'  S
size

Jacketshortcoat
Sleeve
two sheets

Bonding line AD

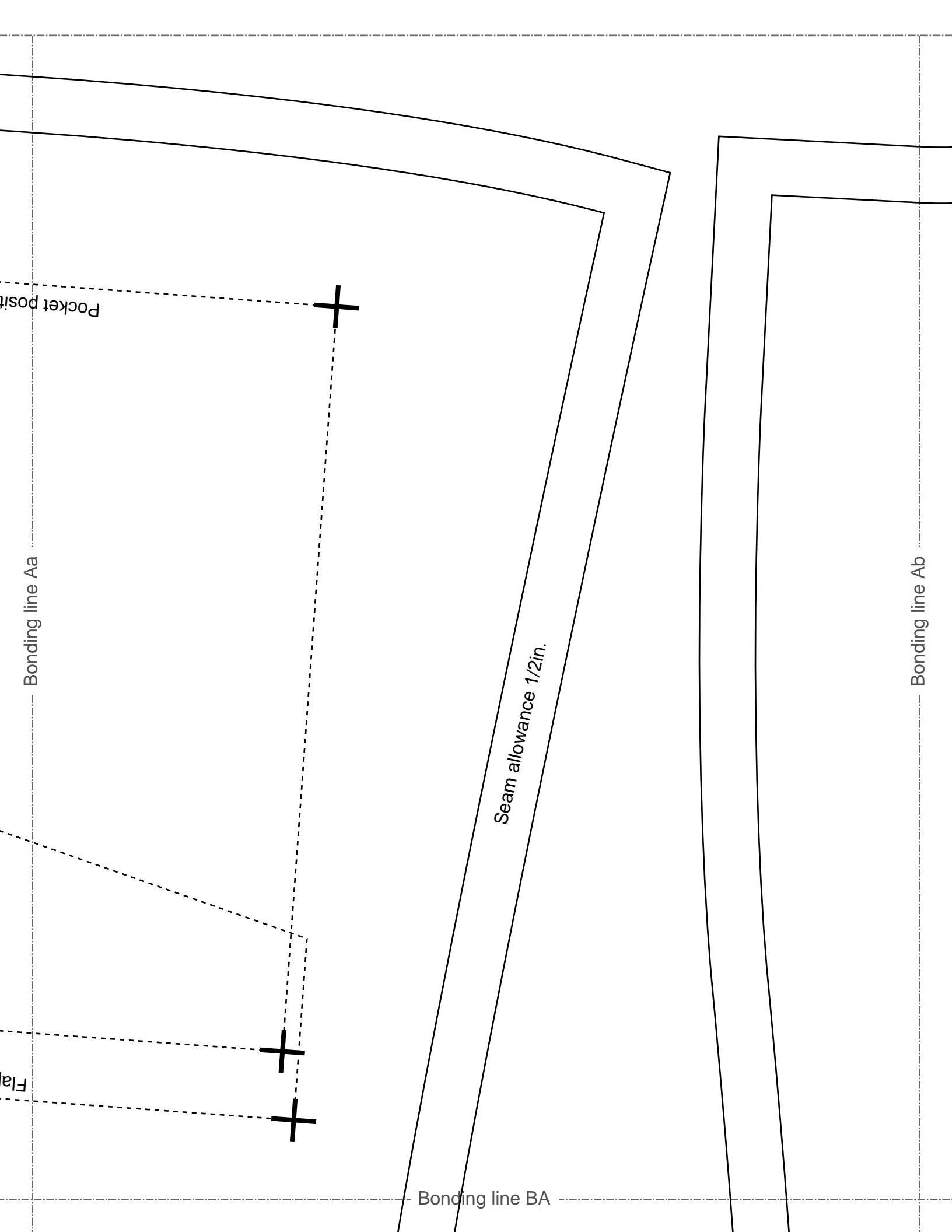
Bonding line AD



Bonding line Ea

Seam allowance 1/2in.

Bonding line AE



Bonding line Aa

Pocket position

Seam allowance 1/2in.

Flap

Bonding line BA

Bonding line Ab

Jacket
For
two

LADI

Bonding line Ba

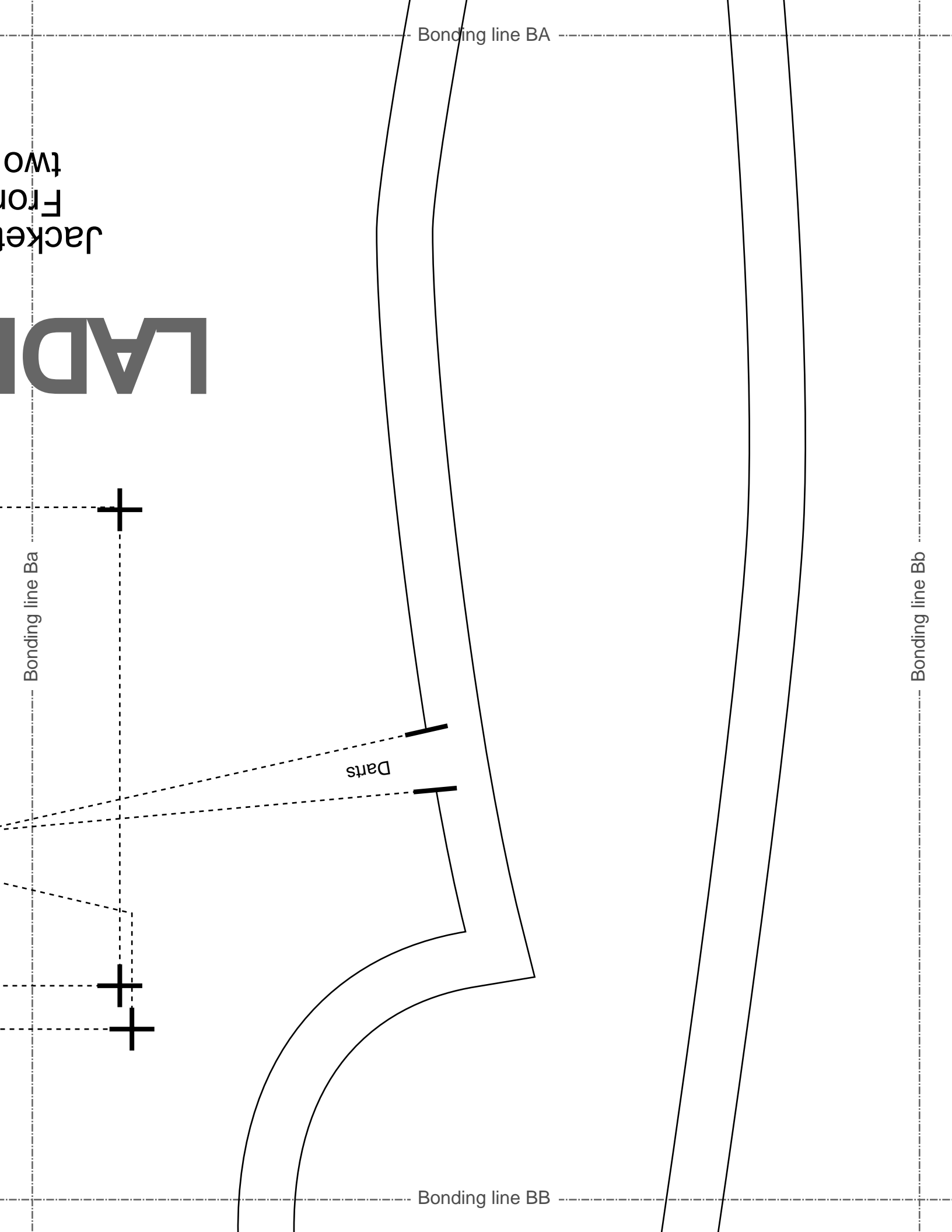


Darts

Bonding line BA

Bonding line BB

Bonding line Bb

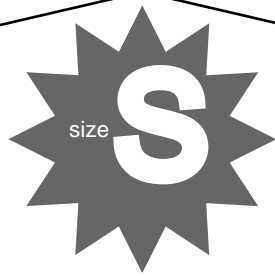


Bonding line BB

Bonding line Ca

DRCOS
SITE <http://drcos.info/en> <http://drcos.com>
MAIL info@drcos.com
Twitter https://twitter.com/drcos_com
facebook <https://www.facebook.com/drcoscom>

Bonding line Cb



Jacketshortcoat
Breast flap
two sheets

Seam allowance 1/2in.

Bonding line BC

Bonding line BC

Bonding line Da



Bonding line BD



Jacketshortcoat
Collar
two sheets
Fusible interlining
one sheet

Seam allowance 1/2in

Bonding line Ea

Bonding line BD

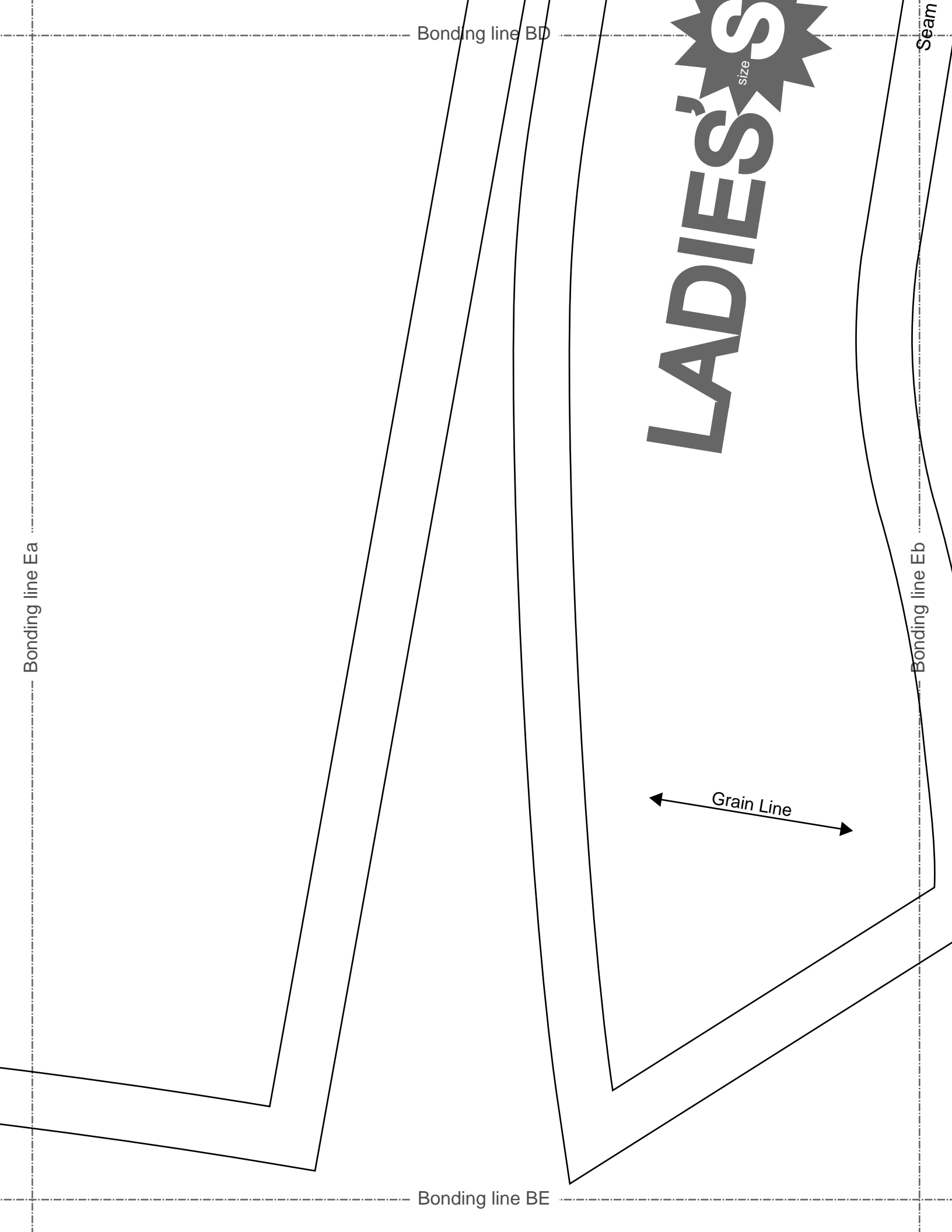
Seam

Bonding line Eb

Bonding line BE

LADIES'S
size

Grain Line



Bonding line Ab

Bonding line Ac

DRCOS

SITE [http://dr-cos.info\(en\)](http://dr-cos.info(en)) [http://dr-cos.com\(jp\)](http://dr-cos.com(jp))
MAIL info@dr-cos.com
Twitter [@drcos_com](https://twitter.com/@drcos_com)
facebook <https://www.facebook.com/drcoscom>

Bonding line CA

Bonding line CA

LADIES'S

size

Jacketshortcoat
Back Body
two sheets

Bonding line Bb

Bonding line Bc



Grain ↓

Bonding line CB

Seam allowance 1/2in.

S

Bonding line CB

Grain Line

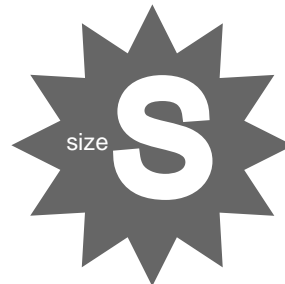


Bonding line Cb

Bonding line Cc

DRCOS

SITE <http://dr-cos.info/en> <http://dr-cos.com/jp>
MAIL info@dr-cos.com
Twitter [@drcos_com](https://twitter.com/@drcos_com)
facebook <https://www.facebook.com/drcoscom>



Bonding line **Jacketshortcoat**
Breast pocket

Interlining
one sheet

Seam allowance 1/2in.

DRCOS
SITE <http://dr-cos.info/en> | <http://dr-cos.com/jp>
MAIL info@dr-cos.com
Twitter <https://twitter.com/dr-cos.com>
facebook <https://www.facebook.com/drcos.com>

Seam allowance 1/2in

Jacketshortcoat
Flap
two sheets



DRCOS
SITE <http://dr-cos.info/en> | <http://dr-cos.com/jp>
MAIL info@dr-cos.com
Twitter <https://twitter.com/dr-cos.com>
facebook <https://www.facebook.com/drcos.com>

Bonding line CD
Jacketshortcoat
Breast pocket
two sheets

Seam allowance 1/2in.

Bonding line CD

Bonding line Dc

Seam

allowance 1/2in.

Bonding line CD

m/drcos.com
http://dr-cos.com(jp)
facebook.com/drcoscom

DRCOS

Bonding line Eb

Bonding line Ec

DRCOS

SITE [http://dr-cos.info\(en\)](http://dr-cos.info(en)) [http://dr-cos.com\(jp\)](http://dr-cos.com(jp))
MAIL info@dr-cos.com
Twitter https://twitter.com/@drcos_com
facebook <https://www.facebook.com/drcoscom>



Jacketshortcoat Pocket two sheets

Seam allowance 1/2in.

Bonding line CE