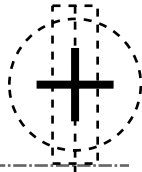
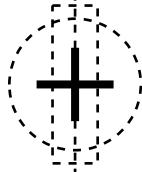


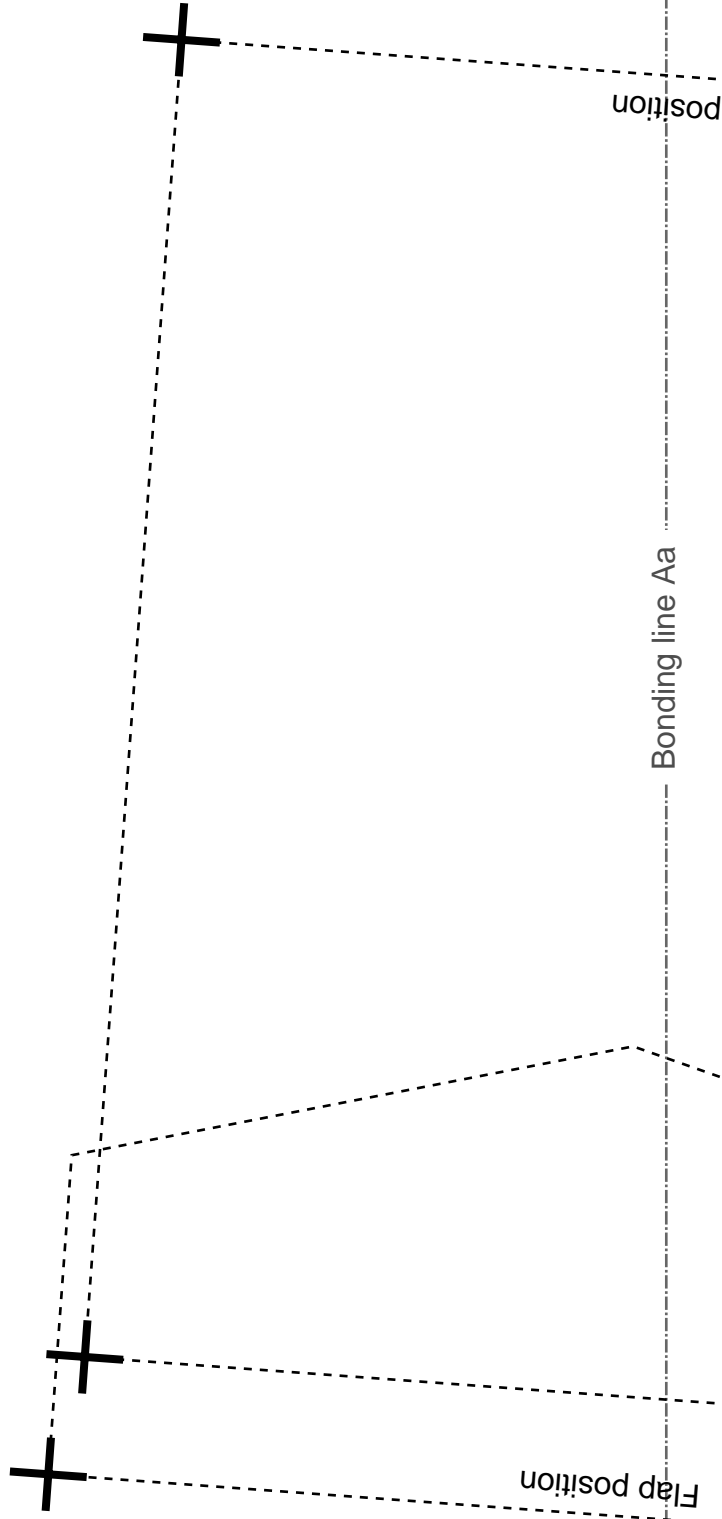
[Home](#)

[Back to Jacketshortcoat page](#)

Grain Line



Bonding line AA



Shortcoat
Front Body
/O sheets



Bonding line Ba

Pocket position

Flap position

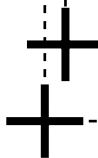
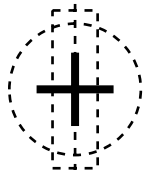
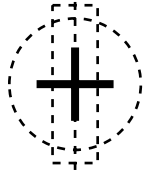
Bonding line AA

Bonding line AB

Center position

Folding line

Folding line



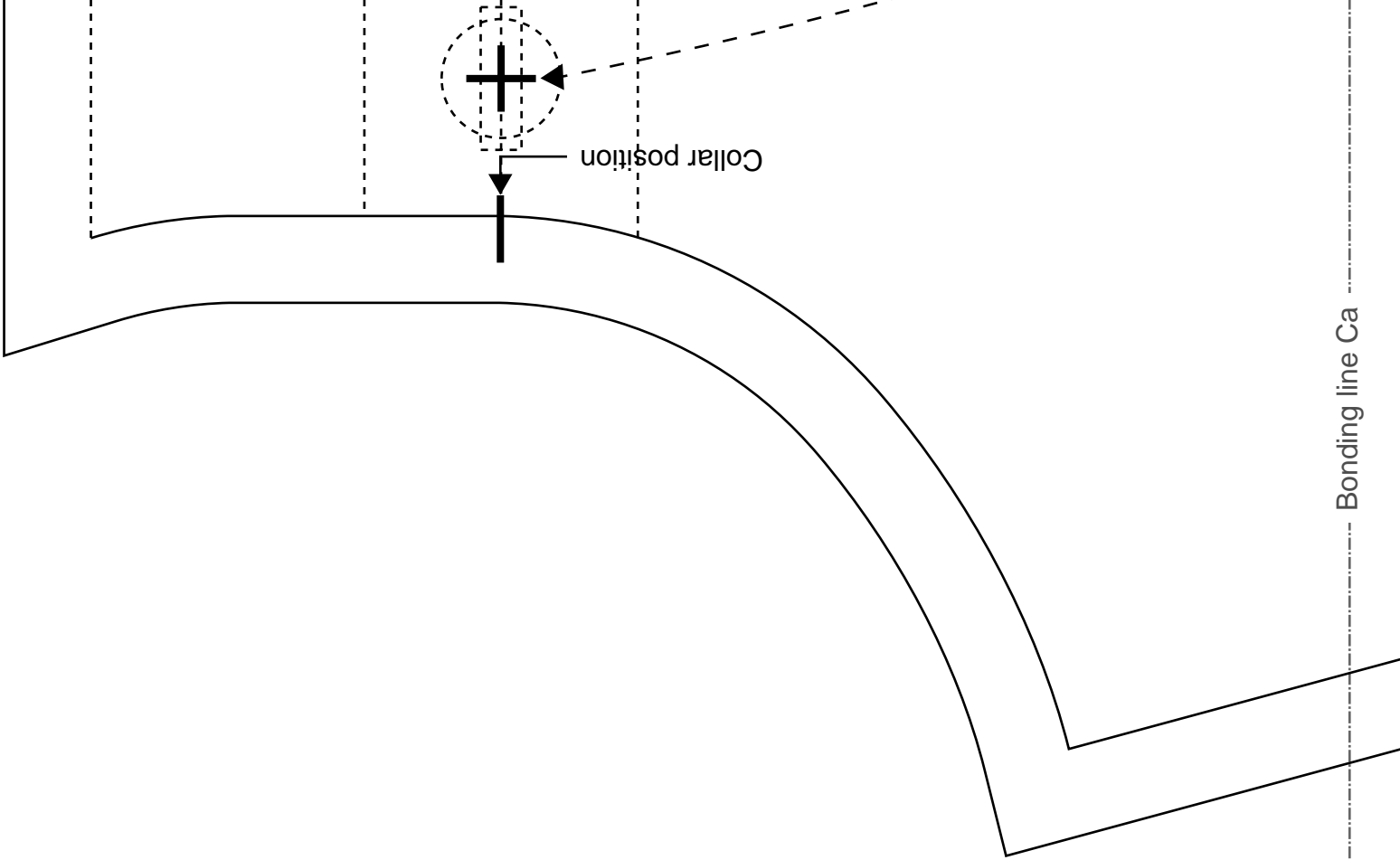
Bonding line AB

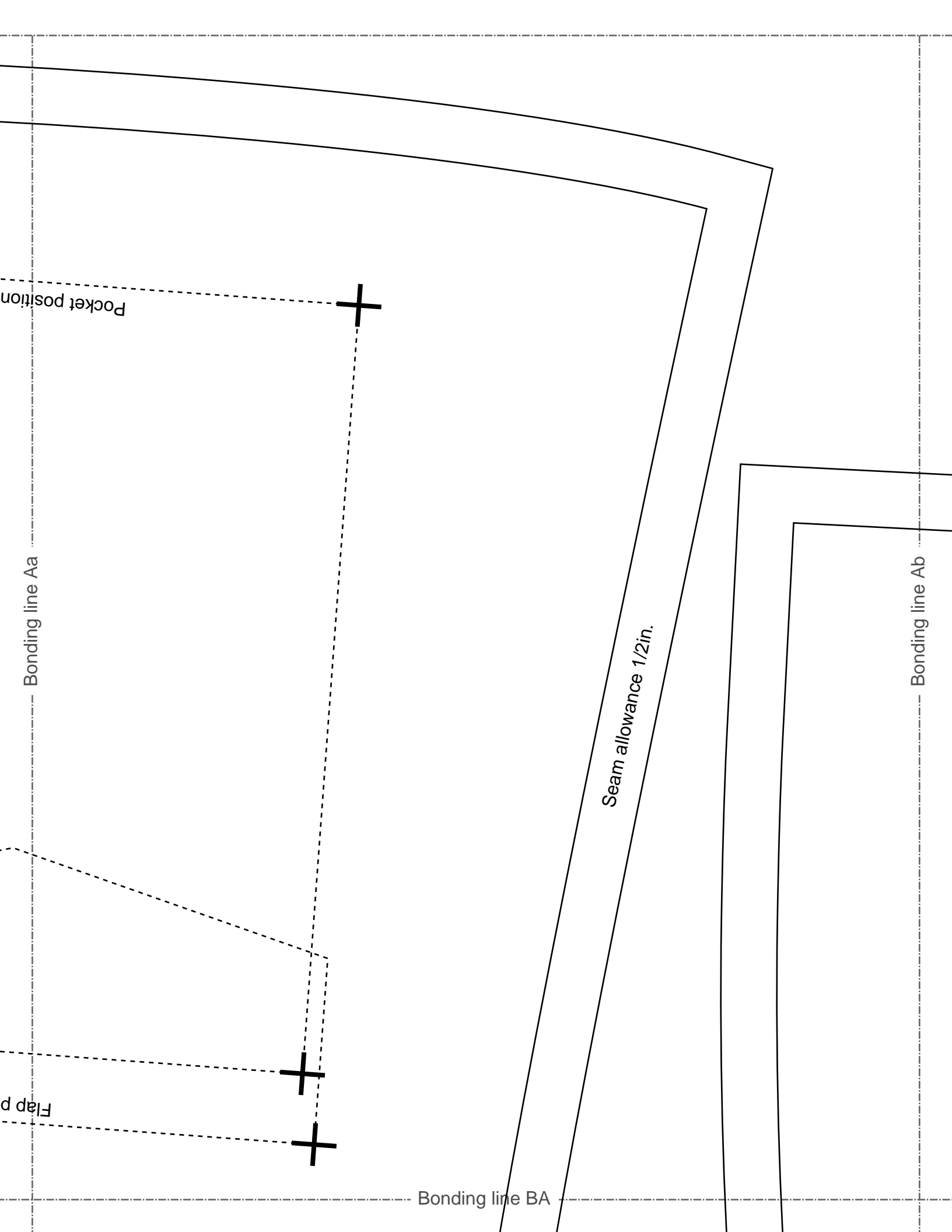
Baste

Collar position

Bonding line Ca

Bonding line AC





Bonding line Aa

Bonding line BA

Bonding line Ab

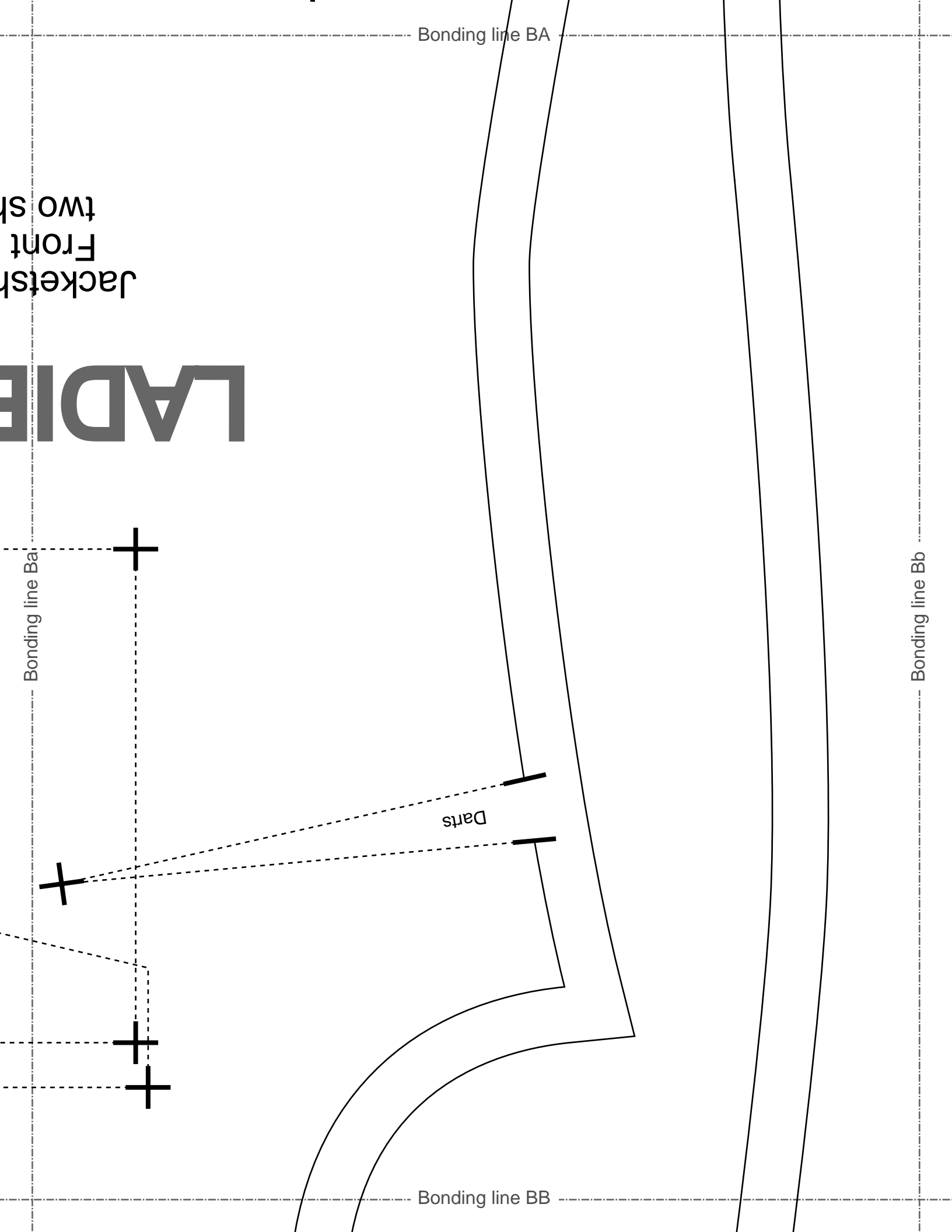
Seam allowance 1/2in.

Pocket position

Flap p

LADIE

Jacketst
Front
two st



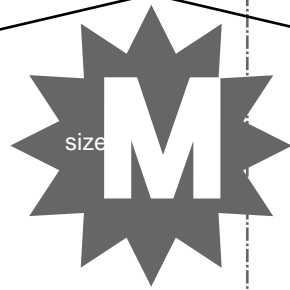
Bonding line BB

Bonding line Ca

Bonding line Cb

Bonding line BC

DRCOS
SITE <http://drcos.info/en> <http://drcos.com/pt>
MAIL info@drcos.com
TWITTER <https://twitter.com/drcos.com>
FACEBOOK <https://www.facebook.com/drcos.com>



Jacketshortcoat
Breast flap
two sheets

Seam

DRCOS

SITE [http://dr-cos.info\(en\)](http://dr-cos.info(en)) [http://dr-cos.com\(jp\)](http://dr-cos.com(jp))
MAIL info@dr-cos.com
Twitter https://twitter.com/@drcos_com
facebook <https://www.facebook.com/drcoscom>

Bonding line Ab

Bonding line Ac

Bonding line CA

Bonding line CA

Bonding line Bb

LADIES'  size M

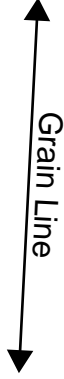
Jacketshortcoat
Back Body
two sheets

Bonding line Bc

Bonding line CB

Bonding line CB

Bonding line Cb



Seam allowance 1/2in.

Bonding line Cc

Bonding line CC



Primer
lap
sets

Seam allowance 1/2in.

Bonding line Ac

Seam allowance 1/2in.

Bonding line Ad

Bonding line DA

Construction

Bonding line DA

ortcoat
VE
eets

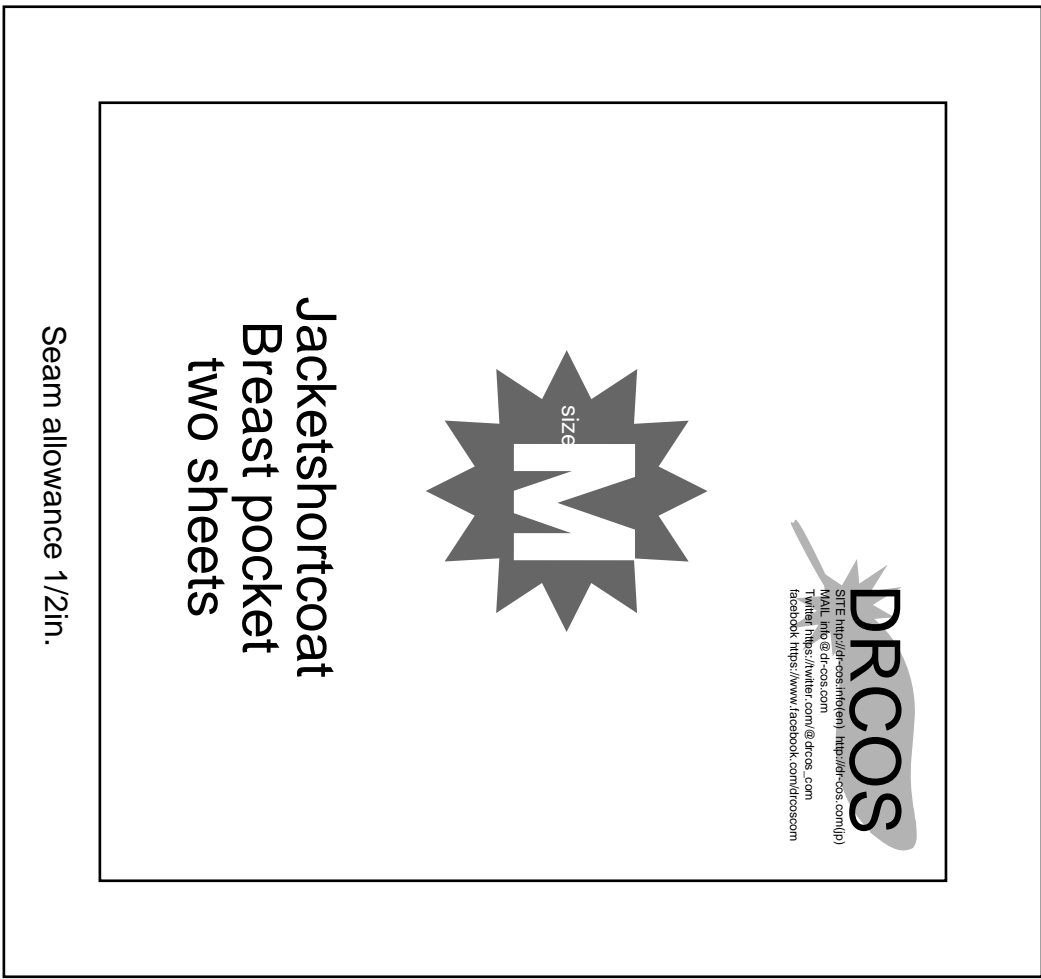


Bonding line Bc

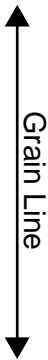
Bonding line Bd

Bonding line DB

Bonding line DB



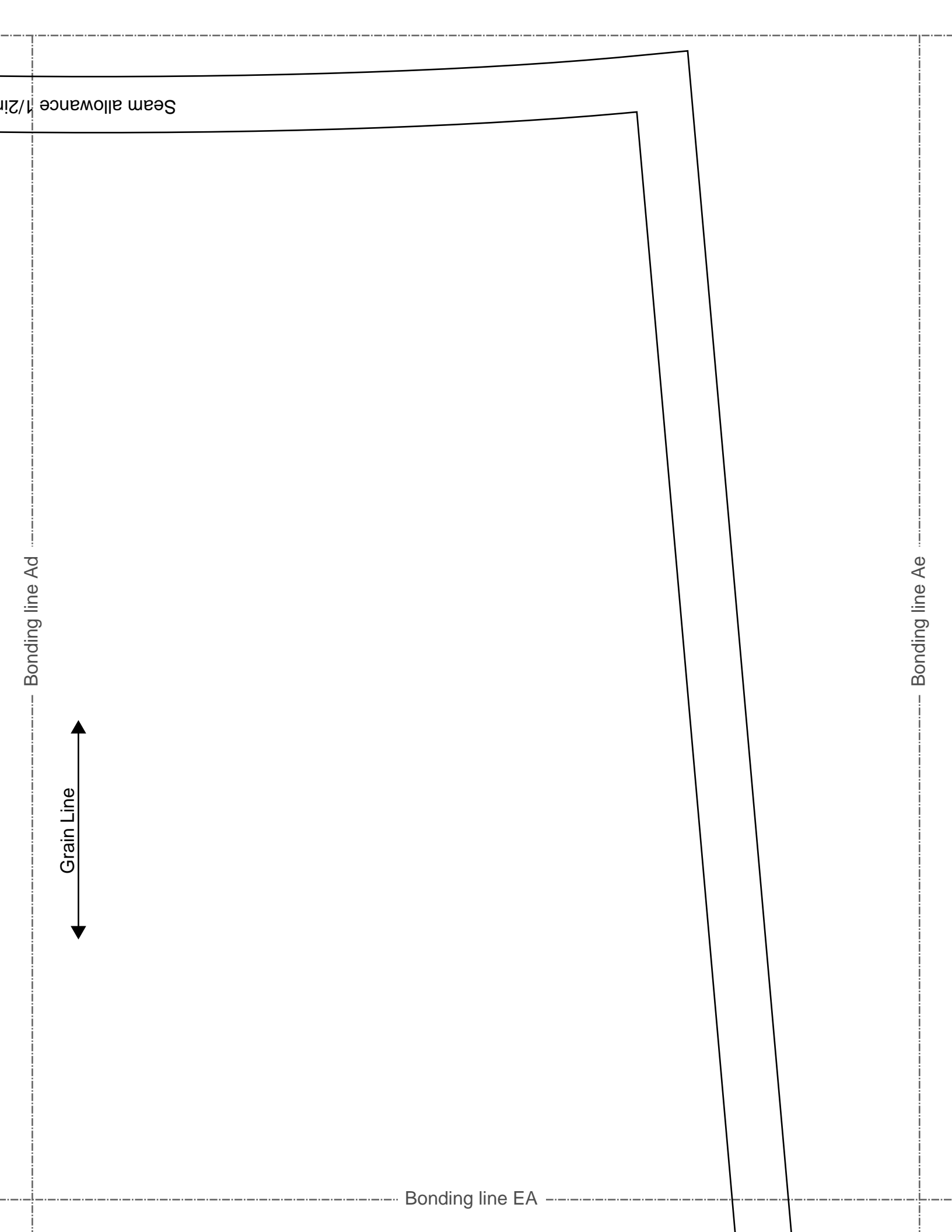
Bonding line Cd



Bonding line DC

Seam allowance 1/2in.

Bonding line Cc



Bonding line EA

Jacketshortco
Sleeve
two sheets

LADIES

Bonding line Bd

Bonding line Be

Bonding line EB

Bonding line EB

SITE <http://dr-cos.info/en> <http://dr-cos.com/pt>
MAIL info@dr-cos.com
Twitter <https://twitter.com/dr-cos>
Facebook <https://www.facebook.com/dr-cos.com>

DRCOS

Bonding line Cd

Bonding line Ce

LADIES' size **M**

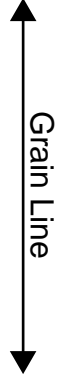
Jacketsho
Colla
two she
Fusible inte
one she

Seam allowance 1/2in.

Bonding line EC

DRCOS

SITE [http://dr-cos.info\(en\)](http://dr-cos.info(en)) [http://dr-cos.com\(jp\)](http://dr-cos.com(jp))
MAIL info@dr-cos.com
Twitter https://twitter.com/drcos_com
facebook <https://www.facebook.com/drcoscom>



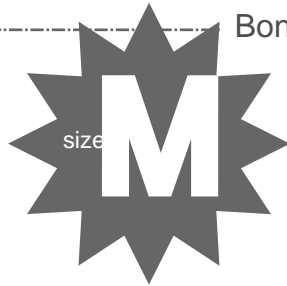
**Jacketshortcoat
Pocket
two sheets**

Seam allowance 1/2in.



DRCOS

Bonding line FB



DRCOS

SITE [http://dr-cos.info\(en\)](http://dr-cos.info(en)) [http://dr-cos.com\(jp\)](http://dr-cos.com(jp))
MAIL info@dr-cos.com
Twitter https://twitter.com/drcos_com
facebook <https://www.facebook.com/drcoscom>

Jacketshortcoat
Flap
two sheets

Seam allowance 1/2in.

Bonding line Ce

Bonding line Cf

Jacketshortcoat
Collar
two sheets
with interlining
two sheets

DRCOS

SITE [http://dr-cos.info\(en\)](http://dr-cos.info(en)) [http://dr-cos.com\(jp\)](http://dr-cos.com(jp))
MAIL info@dr-cos.com
Twitter https://twitter.com/drcos_com
facebook <https://www.facebook.com/drcoscom>

Bonding line FC