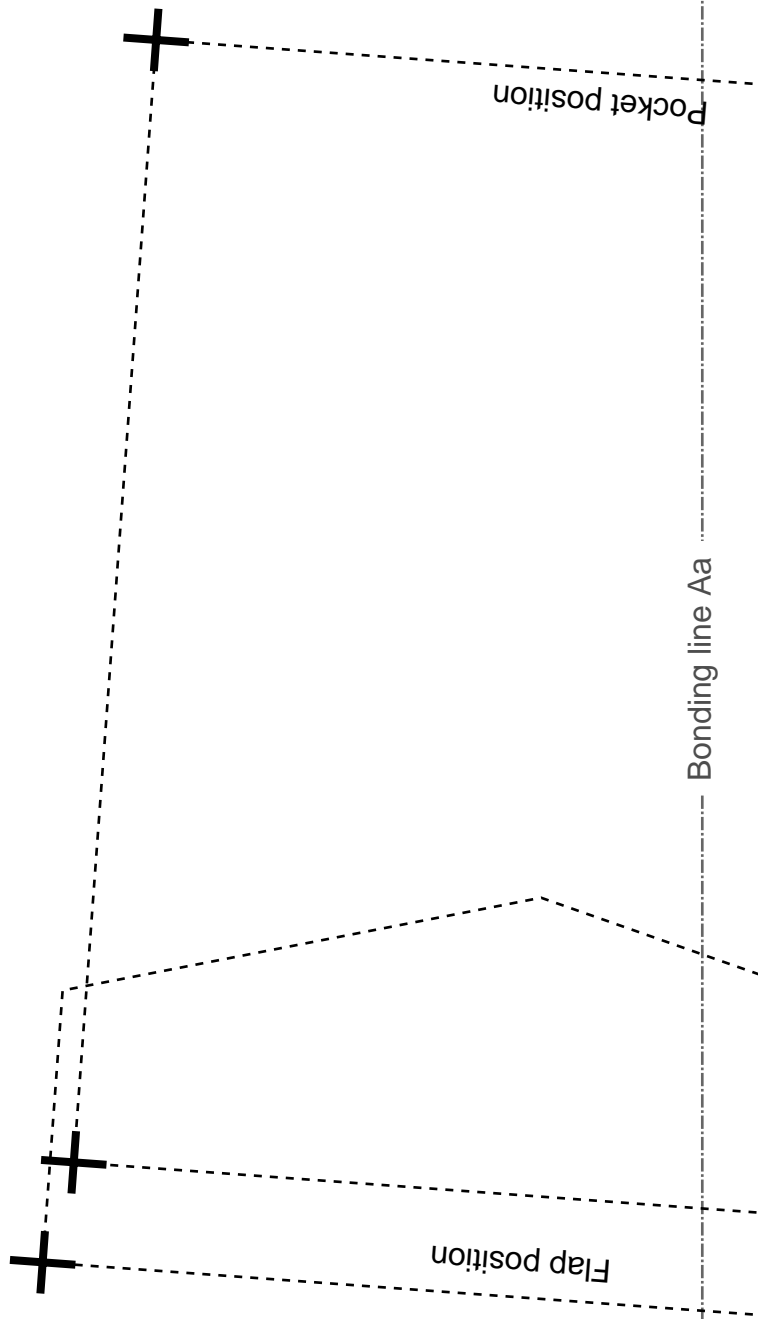


[Home](#)

[Back to Jacketshortcoat page](#)



Bonding line AA

Bonding line Aa

Front Body
two sheets

Jacketshortcoat
Front Body
two sheets



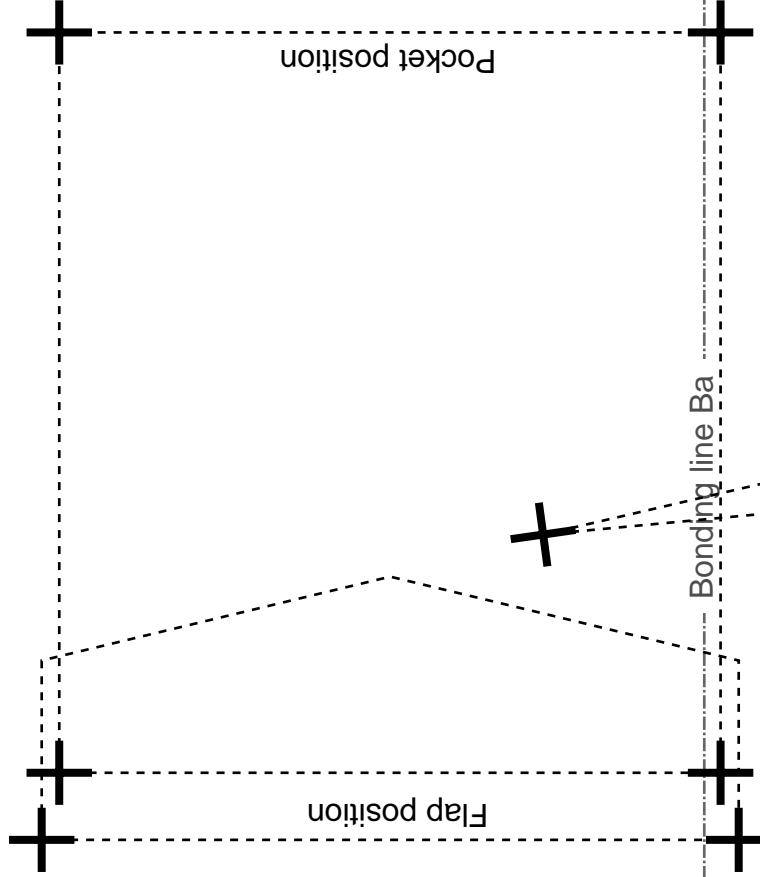
Bonding line AA



Center position

Folding line

Folding line



Pocket position

Flap position

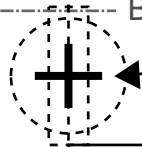
Bonding line Ba

Baste

Bonding line AB



Bonding line AB



Collar position



www.facebook.com/drcoscom
twitter.com/@drcos_com
drcos.com
os.info(en) http://dr-cos.com(jp)
(d) http://dr-cos.com(jp)

DRCOS

Bonding line Ca

DRCOS

SITE [http://dr-cos.info\(en\)](http://dr-cos.info(en)) [http://dr-cos.com\(jp\)](http://dr-cos.com(jp))

MAIL info@dr-cos.com

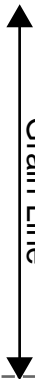
Twitter https://twitter.com/@drcos_com

facebook <https://www.facebook.com/drcoscom>

size

10

Grain Line



Jacketshortcoat

Bonding line AC

Jacketshortcoat
Pocket
two sheets

Seam allowance 1/2in.

DRCOS

SITE <http://dr-cos.info/en> <http://dr-cos.com/jp>
MAIL info@dr-cos.com
Twitter <https://twitter.com/dracos>
facebook <https://www.facebook.com/drcoscom>

Bonding line AD

Bonding line Da

Fr
tw

Poch

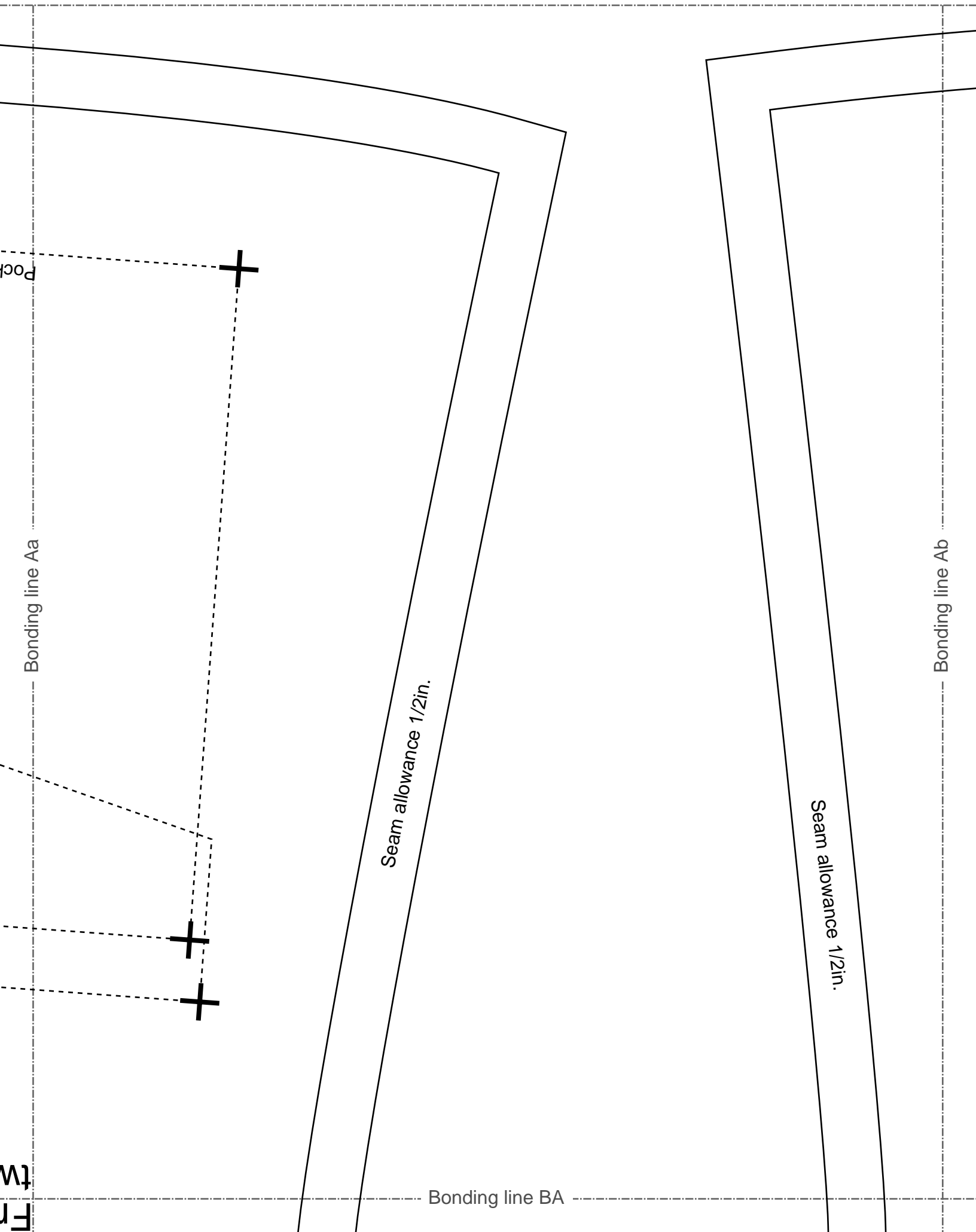
Bonding line Aa

Bonding line BA

Bonding line Ab

Seam allowance 1/2in.

Seam allowance 1/2in.



tw

Fr

Jack

Child

Bonding line BA

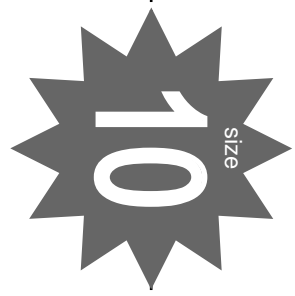


Bonding line Ba

Darts



Bonding line Bb



Bonding line Bc

two

Jacke



SITE I

Bonding line B

Jacketshortcoat
Flap
two sheets

Seam allowance 1/2in.

DRCOS
SITE <http://dr-cos.info/en>) <http://dr-cos.com/jp>)
MAIL info@dr-cos.com
Twitter [@drcos.com](https://twitter.com/@drcos.com)
facebook <https://www.facebook.com/drcoscom>

DRCOS
SITE <http://dr-cos.info/en>) <http://dr-cos.com/jp>)
MAIL info@dr-cos.com
Twitter [@drcos.com](https://twitter.com/@drcos.com)
facebook <https://www.facebook.com/drcoscom>

Bonding line Cb

Jacketshortcoat
Collar
two sheets
Fusible interlining
one sheets

DRCOS
SITE <http://dr-cos.info/en>) <http://dr-cos.com/jp>)
MAIL info@dr-cos.com
Twitter [@drcos.com](https://twitter.com/@drcos.com)
facebook <https://www.facebook.com/drcoscom>

Bonding line Ca

Bonding line BC

Bonding line Da

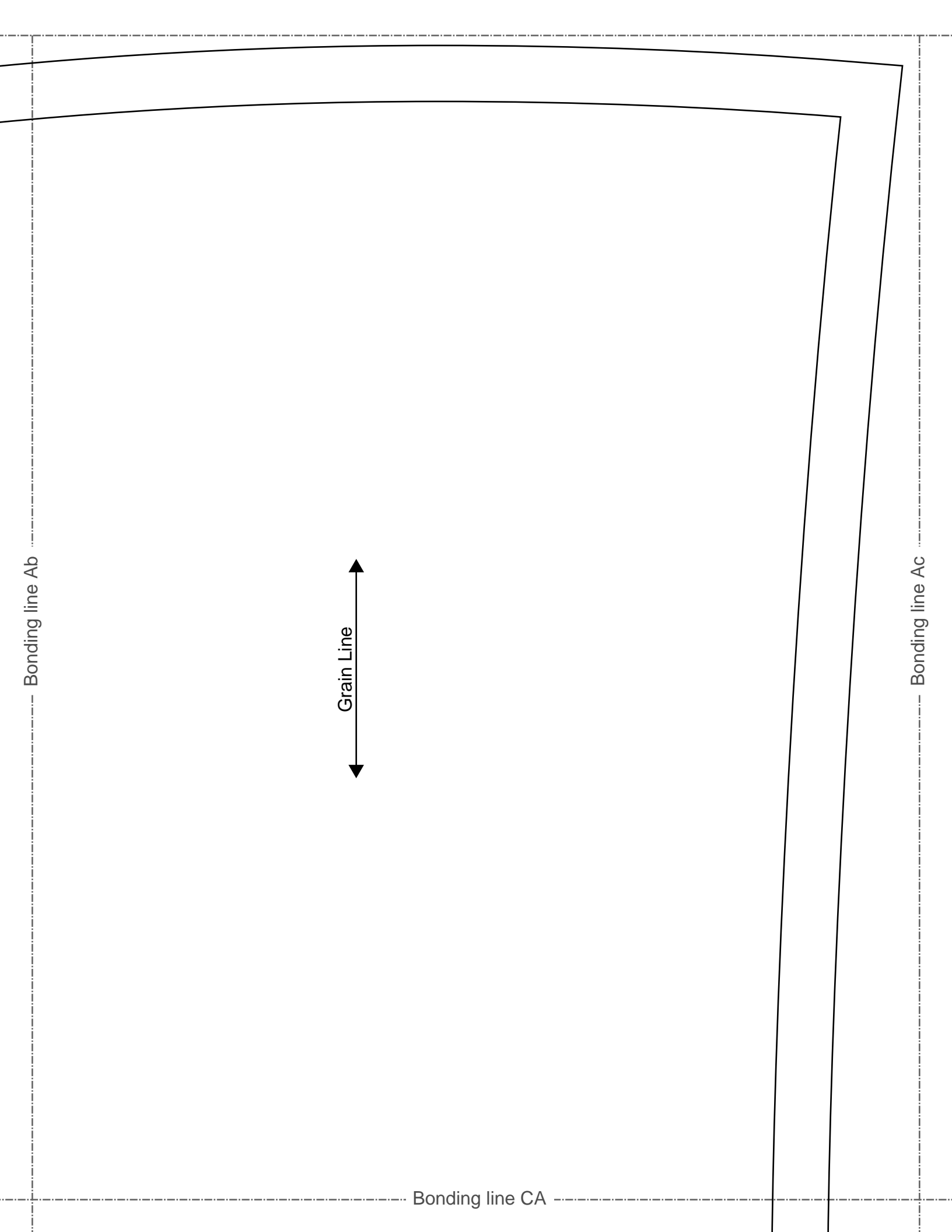
Bonding line BC

Children's ^{size} 10

Jacketshortcoat
Sleeve
two sheets

Bonding line Db

Bonding line BD



Bonding line Ab

Grain Line

Bonding line CA

Bonding line Ac

Bonding line CA

Jacketshortcoat
Back Body
two sheets

Children's
10
size

Bonding line Bb

Bonding line Bc

Bonding line CB

Bonding line CB

[SITE http://dr-cos.info/en](http://dr-cos.info/en) <http://dr-cos.com/fp>
MAIL.INFO@dr-cos.com
[Twitter https://twitter.com/drcos_com](https://twitter.com/drcos_com)
[facebook https://www.facebook.com/drcoscom](https://www.facebook.com/drcoscom)

DRCOS

Bonding line Cb

Seam allowance 2/2in

Children's
10
 size

Grain Line

Bonding line Cc

Bonding line CC

Bonding line CC

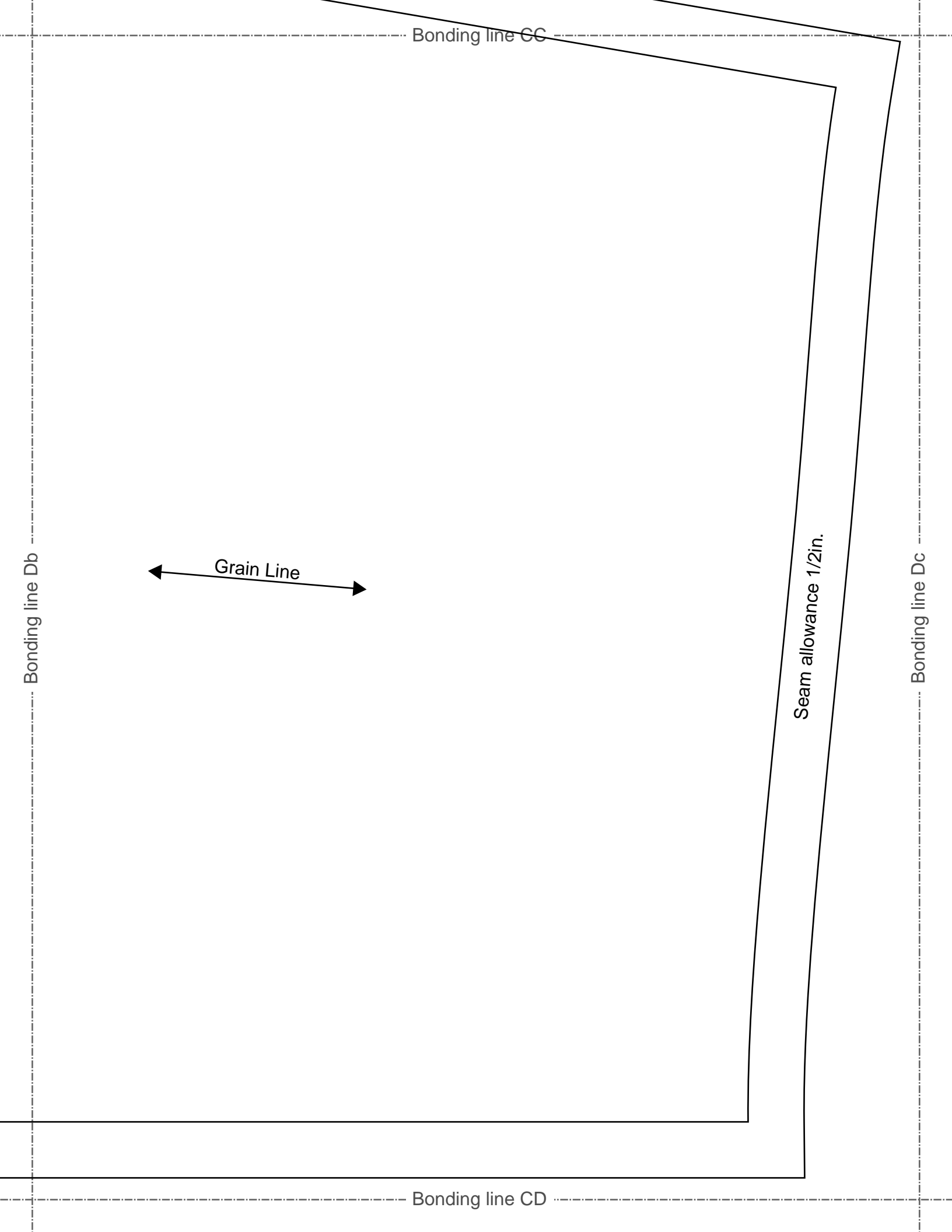
Bonding line Db

Grain Line

Seam allowance 1/2in.

Bonding line Dc

Bonding line CD



DRCOS

SITE <http://dr-cos.info/en> <http://dr-cos.com/jp>
MAIL info@dr-cos.com
Twitter https://twitter.com/drcos_com
facebook <https://www.facebook.com/drcoscom>

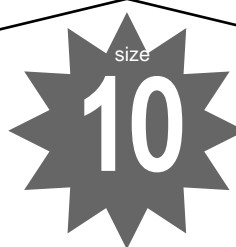


Jacketshortcoat
Breast pocket
two sheets

Seam allowance 1/2in.

Bonding line Cc

Bonding line Cd



Jacketshortcoat
Breast flap
two sheets

Seam allowance 1/2in.